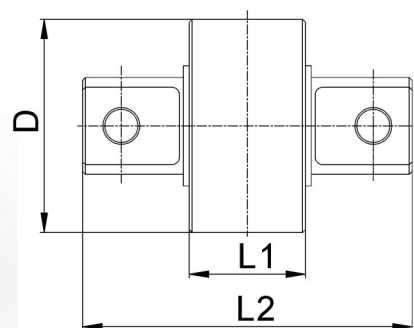
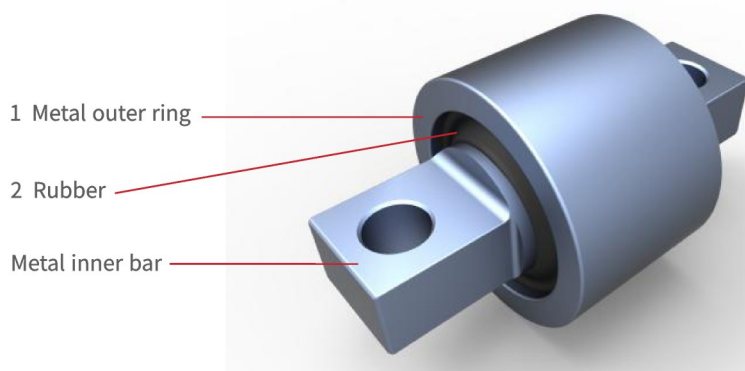


TRACTION LINK BUSHING

Application of traction link for light rail, metro, intercity, high speed, monorail trains etc.

STRUCTURE AND THE FUNCTION ▶▶▶

- ❶ **Metal outer ring** is part integrated in to traction links.
- ❷ **Rubber** provides the deflection capacity and stiffness in all degrees of freedom. It also provides a certain level of damping. It acquires good fatigue performance by different rubber formula according to application conditions.
- ❸ **Metal inner bar** is to be designed according to different interface dimensions from customer.



MAIN CHARACTERISTIC ▶▶▶

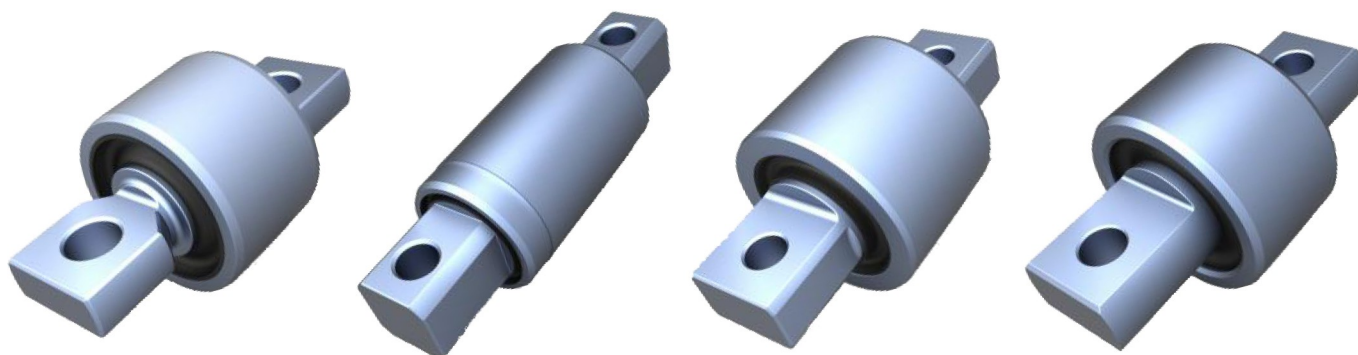
Traction link bushing has a required radial stiffness and smaller torsional and conical stiffness. The diameter is bigger, the reliability is better.

CAPABILITIES ▶▶▶

- Produce all types of traction link bushings;
- Produce products comply with EN45545-2;
- Rapid design and develop new parts according to customer's requirements;
- Products are serviced in 6 continent of the world;
- Products have been used in all kinds of rolling stocks: light rail, metro, intercity, high speed, monorail trains etc.

TRACTION LINK BUSHING

TRACTION LINK BUSHING TYPES ▶▶▶



PLEASE FILL THE TABLE BELOW FOR ANY ENQUIRE ▶▶▶

Train type	<input type="checkbox"/> Intercity; <input type="checkbox"/> Regional; <input type="checkbox"/> Suburban; <input type="checkbox"/> Inner city; <input type="checkbox"/> High speed train; <input type="checkbox"/> other				
Max. speed	km/h		Operation area	Country/city	
Axle load	Ton		Diameter of outer ring (D)	mm	
Traction Acceleration	m/s ²		Length of outer ring (L1)	mm	
Braking Acceleration	m/s ²		Max. Torsional angle	°	
Max. Conical angle	°		Length of Bushing (L2)	mm	
Radial stiffness	kN/mm		Conical stiffness	Nm/°	
Torsional stiffness	Nm/°				

Product details can be found in website:

<http://www.zztmt.com/zztmt/>